

INSTRUCTORS & PERFORMERS

As we prepare for our 29th annual **Buckeye Dulcimer Festival** our plan, as always, is to bring to you the best instructors possible. Many of these wonderful folks have been suggested by you as favorites. This year's instructors for the **EXTENDED SESSIONS** are:

Mountain Dulcimer

To Be Announced – Beginner – if 5 in class
Diane Hochstetler – Past Beginner/Early Intermediate
Lorinda Jones – Intermediate II & Advanced
Marsha Harris – Intermediate II & Advanced

The **Intermediate II** and **Advanced** mountain dulcimer players will have the opportunity to work one day with **Marsha** and one day with **Lorinda**.

Hammered Dulcimer

To Be Announced – Beginner – if 5 in class
Chris Steiner – Past Beginner/Early Intermediate
Phyllis Woods Brown – Intermediate II & Advanced
Tina Bergmann – Intermediate II & Advanced

The **Intermediate II** and the **Advanced** hammered dulcimer participants will be studying one day with **Tina** and one day with **Phyllis**.

Other Acoustic Instruments

Band-it! – Shari Wolf, Beyond Basics – all instruments

Autoharp – Michael Poole, Past Beginner & Above

Clawhammer Banjo – Joe Steiner, Past Beginner & Above

SATURDAY – All Instrument Jam in the morning

Mini-sessions for MD, HD, Autoharp, and more

BEGINNER SESSIONS (3 ½ hours)

Mountain Dulcimer – Ricki Spicer
Hammered Dulcimer – Jill Nichols
Autoharp – Phyllis Davis
Harp – Phyllis Howard

Check our website for updates!

Check our website www.buckeyedulcimerfestival.com for instructor bios, class descriptions & schedules.

Tentative Festival Schedule, SUBJECT TO CHANGE – 2020

With the change of Festival dates, we have more opportunities for activities. Please check our website for all updates.

EXTENDED PACKAGES #1 & #2

Wednesday, April 22nd

2:00 pm Registration begins
 5:30 pm DINNER
 7:00 pm Introduction & Orientation
 8:00 pm Workshops & Jamming!

Thursday, April 23rd 9:00 am – 12:00 pm

Workshop Sessions

Mountain Dulcimer

Beginner TBA – if 5 registrations
 Past Beginner Diane Hochstetler
 Intermediate II Marsha Harris
 Advanced Lorinda Jones

Hammered Dulcimer

Beginner TBA – if 5 registrations
 Past Beginner Chris Steiner
 Intermediate II Tina Bergmann
 Advanced Phyllis Woods Brown

Autoharp

Past Beginner & Above Michael Poole

“Band-It!”

All Instruments – Beyond Basics Shari Wolf

Clawhammer Banjo

Past Beginner & Above Joe Steiner

12:00 - 1:00 pm LUNCH

1:15 - 3:15 pm Intensive sessions (con't.)
 4:00 - 5:00 pm Open Stage
 5:30 pm DINNER
 7:00 pm Workshops & Jamming!

BUCKEYE DULCIMER FESTIVAL SHORT & LONG SLEEVE T - SHIRT & SWEATSHIRT

The shirt design, for the
 29th annual BUCKEYE DULCIMER FESTIVAL
 will soon be shown on our website:

www.buckeyedulcimerfestival.com

To ensure that we have enough shirts and the right sizes, we're asking that you pre-order your T-shirt or sweatshirt on the Registration Form.

No shirt orders will be accepted after April 1, 2020

WEEKEND PACKAGES #3 & #4

Friday, April 24th

9:00 - 12:00 pm Intensive sessions (con't.)
 12:00 - 1:00 pm LUNCH
 1:15 - 3:15 pm Intensive sessions (con't.)

3:00 pm Registration for the
 Weekend Package begins

4:00 - 5:00 pm Open Stage
 5:00 pm DINNER
 7:00 pm Instructors' Concert

Saturday, April 25th

9:00 - 11:45 am Sessions (see schedule)

11:45 - 1:15 pm LUNCH

1:15 - 4:00 pm Sessions (see schedule)
 4:15 - 5:00 pm **Always a Surprise**
 5:00 pm DINNER
 7:00 pm Instructors' Concert

Sunday April 26th

7:00 am Coffee and Donuts
 7:30 am Morning Devotions
 (non-denominational)
 8:30 am Gospel Sing
 9:30 am Brunch, Raffle, & Good-Byes

For more information about:
BUCKEYE DULCIMER FESTIVAL
 call or write

Shari Wolf or Joyce Harrison, Co-Directors
 4848 Johns Road
 Houston, OH 45333

Phone:
 (937) 295-5253 (home)
 (937) 216-5176 (Shari's cell)
 (937) 216-2002 (Joyce's cell)
 e-mail: buckeyedulcimer@yahoo.com

For updates — see
www.buckeyedulcimerfestival.com

Final Registration Deadline: April 15, 2020 or until filled.

29th Annual Buckeye Dulcimer Festival

🌸🌸 **NEW DATE** 🌸🌸

APRIL 22 - 26, 2020

Great Instructors

Instructor Led Jams

Fun Lifetime Friends

Lorinda Jones

Michael Poole

Marsha Harris

Shari Wolf

Tina Bergmann

Joe Steiner

Phyllis Woods Brown

Chris Steiner

Diane Hochstetler

Jill Nichols, Ricki Spicer, Phyllis Davis, Phyllis Howard

Recreation Unlimited
Ashley, OH

Shari Wolf/Joyce Harrison
 Co-Directors
 937-295-5253

buckeyedulcimer@yahoo.com
www.buckeyedulcimerfestival.com

BUCKEYE DULCIMER FESTIVAL

...is a unique opportunity for acoustic instrument players to learn, listen, and play together. We're working hard to make your music experience a rewarding one.

Our Thursday & Friday extended sessions include 5 hours each day of in-depth, intensive instruction for Mountain and Hammered Dulcimer, Autoharp, Clawhammer Banjo, and the "Band-it!" workshop for all acoustic instruments. In addition to the workshops, there are **many** opportunities for a variety of jams. **Watch our website for other opportunities.** We invite you to join us for a fun and learning experience.

On Friday afternoon, the extended session BUCKEYE DULCIMER FESTIVAL shifts gears to take on the look of a weekend festival including the Friday night instructors' concert.

Four workshop sessions on Saturday cover all ability levels of the mountain and hammered dulcimer plus other traditional instruments. Saturday's schedule continues with a relaxing 'kick-back' afternoon, and another instructors' concert at 7:00 pm.

SATURDAY SCHEDULE INCLUDES...

3 ½ HOUR BEGINNER SESSIONS for
Mountain Dulcimer – Hammered Dulcimer
Autoharp – Harp

Beginning players will have the opportunity to work with one instructor for three sessions (both morning sessions and the first afternoon session). This is a great opportunity for people who have always wanted to try a new instrument.

The festival concludes on Sunday with Morning Devotions, the traditional Gospel Sing, Brunch, and the Raffle Drawing.

Vendors and instrument builders will be present for the weekend event, so you will have an excellent opportunity to purchase musical instruments, supplies, books, and CDs throughout the weekend.

Pre-Registration is a **MUST**. Return the enclosed registration form today to reserve your spot for learning, fun, and fellowship!

Due to Recreation Unlimited's regulations, anyone attending under the age of 18 must be accompanied and supervised at all times by an adult.

EARLY BIRD REGISTRATION FEE OPTIONS!

We are pleased to again offer you "Early Bird" pricing options for Buckeye Dulcimer Festival 2020.

For participants who register and pay, **IN FULL, before January 10, 2020**, there are discounted fees. *Be sure to read your registration form carefully.*

And be sure to write your checks payable to

BUCKEYE DULCIMER FESTIVAL, LLC

BUCKEYE DULCIMER FESTIVAL
will be held at



...a nonprofit organization providing programs in sports, recreation and education for individuals with physical and developmental disabilities and other health concerns. In addition, the beautiful campus and facilities are available for a variety of other activities including school group outings, corporate team building, conferences and workshops.

This year-round campus features a 20,000 square foot Life Center, three major residence halls, semi-private housing in the Greif House, private housing cottage, multi-purpose Lodge, Creative Center, Dining Hall, Health Services Center, administrative and support buildings.

Location: Recreation Unlimited is located 35 minutes northeast of Columbus, on Piper Road,

HOUSING ... STAY WITH US AT RECREATION UNLIMITED

**(Dorm or Semi-private housing) ...
MOTEL IT! ... COMMUTE FROM HOME**

We Have A Choice of Housing Options.

DORM STYLE: There are 3 Residence Halls (A, B, and C) (**WHITE form**) that consist of two wings with a large lounge and restrooms in the central area. Each cabin can house approximately 48 participants ... 24 in each wing.

Residence Hall B has been designated as our 'couples' cabin. Gents are housed in one wing and ladies in the other.

No one sleeps in an upper bunk. There are hospital beds with electric raise/lower features available.

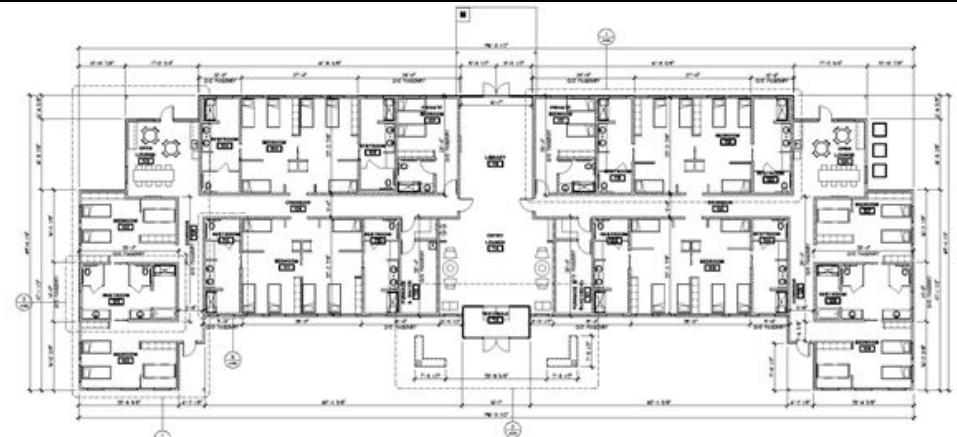
There are plenty of electric outlets to accommodate CPAP machines.

SEMI-PRIVATE ACCOMMODATIONS: The Greif House (**BLUE form**) providing semi-private housing options to participants opened in Spring, 2018.

This new building provides a fine alternative to 'dorm' housing without driving to and from a motel for a price very competitive to motel rates. The Greif House provides semi-private housing for 2, 3, or 6 people including full restroom facilities for each pod.

Full pricing details are shown on the Registration Form included with this brochure.

If you have any other questions, feel free to call 937-295-5253 for your answers.



Included in your confirmation letter, you'll find a listing of things that will make your stay a pleasant one.